

MERITOR WABCO

Technical Bulletin

TOOLBOX™ Software User Guide for Electronic Air Processing (EAP)

Meritor WABCO Electronic Air Processing

This user guide provides instructions for using Meritor WABCO TOOLBOX™ Software to perform the following EAP-related functions:

- Check the performance of the unit
- Ensure that the unit is functioning correctly
- Diagnose and troubleshoot dryer-related issues using error codes

Using TOOLBOX™ Software to Perform EAP-Related Functions

1. Open the TOOLBOX™ Software. Figure 1.



Figure 1

2. Click on the Pneumatic ABS icon from the main screen. Figure 2.



Figure 2

3. Go to the Components menu and select EAP from the drop-down list. The following screen will appear. Figure 3.

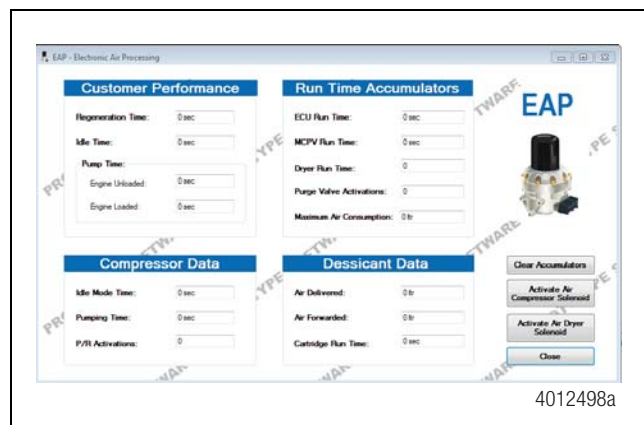


Figure 3

4. **Check the Purge Solenoid.** On the EAP home screen, with the truck running and at full system pressure, click the “Activate Air Dryer Solenoid” button. You should hear the air dryer purge. This will show that the purge valve is working correctly.
5. **Check the Compressor Load/Unload Solenoid.** On the EAP home screen, with the truck running, charge the system to full pressure and use the brakes to bleed off pressure until the dash gauge reads 120 psi (8.27 bar). Then, click the “Activate Air Compressor Solenoid” button. The compressor should go “on-load” for 15 seconds and the system pressure should raise 3 psi (0.20 bar) or more, depending on the system layout. After the 15 seconds, the compressor will “unload”. This will show that the air dryer is triggering the compressor correctly.

Error Codes

Refer to the error codes in the following table to troubleshoot EAP dryer issues. Figure 4 and Figure 5.

EAP Error Codes					
SPN	FMI	Description	Warning Light	Cause	Action
520310	2	Data erratic, intermittent or incorrect	ATC Light	At least one pressure sensor value is not plausible when compared to the other value.	<ul style="list-style-type: none"> Contact the OEM for pressure sensor trouble shooting guidance.
520310	0	Data valid, but above normal operation range (most severe level)	ATC Light	System configuration is not plausible.	<ul style="list-style-type: none"> Contact the Meritor OnTrac™ Customer Call Center at 866-668-7221 if this issue arises.
520310	9	Abnormal update rate	ATC Light	System configuration is not plausible.	<ul style="list-style-type: none"> Contact the Meritor OnTrac™ Customer Call Center at 866-668-7221 if this issue arises.
520310	14	Special instructions	ATC Light	System configuration is not plausible.	<ul style="list-style-type: none"> Contact the Meritor OnTrac™ Customer Call Center at 866-668-7221 if this issue arises.
520310	7	Mechanical system not responding correctly or out of adjustment	ATC Light	System configuration is not plausible.	<ul style="list-style-type: none"> Contact the Meritor OnTrac™ Customer Call Center at 866-668-7221 if this issue arises.
520310	10	Abnormal rate of change	ATC Light	The system pressure reaches a high pressure level too quickly.	<ul style="list-style-type: none"> Ensure external air sources are disconnected and that there is no water in the wet/primary/secondary tanks.
1052	13	Out of calibration	ATC Light	System configuration is not plausible.	<ul style="list-style-type: none"> Contact the Meritor OnTrac™ Customer Call Center at 866-668-7221 if this issue arises.
1055	13	Out of calibration	ATC Light	System configuration is not plausible.	<ul style="list-style-type: none"> Contact the Meritor OnTrac™ Customer Call Center at 866-668-7221 if this issue arises.
1052	5	Current below normal or open circuit	ATC Light	System configuration is not plausible.	<ul style="list-style-type: none"> Contact the Meritor OnTrac™ Customer Call Center at 866-668-7221 if this issue arises.
1052	3	Voltage above normal or shorted high	ATC Light	System configuration is not plausible.	<ul style="list-style-type: none"> Contact the Meritor OnTrac™ Customer Call Center at 866-668-7221 if this issue arises.
1055	5	Current below normal or open circuit	ATC Light	System configuration is not plausible.	<ul style="list-style-type: none"> Contact the Meritor OnTrac™ Customer Call Center at 866-668-7221 if this issue arises.
1055	3	Voltage above normal or shorted high	ATC Light	System configuration is not plausible.	<ul style="list-style-type: none"> Contact the Meritor OnTrac™ Customer Call Center at 866-668-7221 if this issue arises.

4012499a

Figure 4

EAP Error Codes

SPN	FMI	Description	Warning Light	Cause	Action
812	5	Current below normal or open circuit	ATC Light	System short	<ul style="list-style-type: none"> Ensure all wiring connections are solid and no obvious shorts exist. Also ensure that wires are in the correct locations. Contact the Meritor OnTrac™ Customer Call Center at 866-668-7221 if this issue persists.
1351	0	Data valid, but above normal operation range (most severe level)	ATC Light	The system pressure is above the set maximum value.	<ul style="list-style-type: none"> Ensure all air lines and wiring connections are tight and inserted. Contact the Meritor OnTrac™ Customer Call Center at 866-668-7221 if the problem persists.
1351	6	Current above normal or grounded circuit	ATC Light	The system pressure continues to rise after the compressor has been shut off.	<ul style="list-style-type: none"> Contact the OEM for pressure sensor troubleshooting guidance.
1351	11	Failure mode not identifiable/ root cause not known	ATC Light	The system pressure does not build after a long period of pumping. No regeneration possible.	<ul style="list-style-type: none"> Ensure that both ends of the compressor signal line are connected and that the entire line is leak free. Use a pressure gauge to verify that line contains system pressure when the “Activate Air Compressor Solenoid” button is pressed. This will turn on the compressor for 15 seconds. Also, ensure that that signal line pressure drops to zero when the 15 seconds has passed. Contact the Meritor OnTrac™ Customer Call Center at 866-668-7221 if this issue arises.

4012500a

Figure 5

MERITOR WABCO

Meritor WABCO Vehicle Control Systems
2135 West Maple Road
Troy, MI 48084-7121 USA
866-OnTrac1 (668-7221)
meritorwabco.com

Information contained in this publication was in effect at the time the publication was approved for printing and is subject to change without notice or liability. Meritor WABCO reserves the right to revise the information presented or to discontinue the production of parts described at any time.

Copyright 2015
Meritor, Inc.
All Rights Reserved

Printed in USA

TP-1610
Issued 11-15
(16579)