

# MERITOR WABCO

## Technical Bulletin

### Tractor ABS ECU System Parameter Update for E4.4 Software Version ECUs E441 and E442 with Surplus Auxiliary Capability

#### Hazard Alert Messages

Read and observe all Warning and Caution hazard alert messages in this publication. They provide information that can help prevent serious personal injury, damage to components, or both.

#### WARNING

To prevent serious eye injury, always wear safe eye protection when you perform vehicle maintenance or service.

Park the vehicle on a level surface. Block the wheels to prevent the vehicle from moving.

#### How to Obtain Additional Maintenance, Service and Product Information

For more information about E Version Tractor ABS ECUs, refer to Maintenance Manual MM-0112, Anti-Lock Braking System (ABS) and Electronic Stability Controls (ESC) For E Version ECUs 12-Volt and 24-Volt Systems. If you have any questions about the material covered in this publication, or for more information about the Meritor WABCO product line, please contact the Meritor OnTrac™ Customer Call Center at 1-866-OnTrac1 (866-668-7221) or visit our website: [www.meritorwabco.com](http://www.meritorwabco.com)

#### System Description and Operation

The ECU is the control center of the ABS. Meritor WABCO ABS ECUs with E4.4 software version or newer have the ability to support many advanced features such as Roll Stability Control, Electronic Stability Control and Hill Start Aid. The ABS ECU receives information from the sensors, processes data and sends signals to modulator valves and active braking valves to achieve different tasks based on how the ECU is configured.

#### Purpose of the ABS ECU Parameter Update

**NOTE:** This update does not apply to vehicles with Hill Start Aid enabled.

Not all vehicles manufactured with Meritor WABCO ABS ECUs with E4.4 software version or newer have every feature in the ECU enabled. Certain vehicles may inadvertently turn on the ABS lamp and set a DTC (SID 19 FMI 8) for a feature for which the vehicle is not configured. This update will prevent this issue from occurring. This procedure will only apply to E4.4 software version ECUs: E441 and E442 installed on vehicles built after October 2012. The software version can be found in the ECU information field of TOOLBOX™ Software. Figure 1.

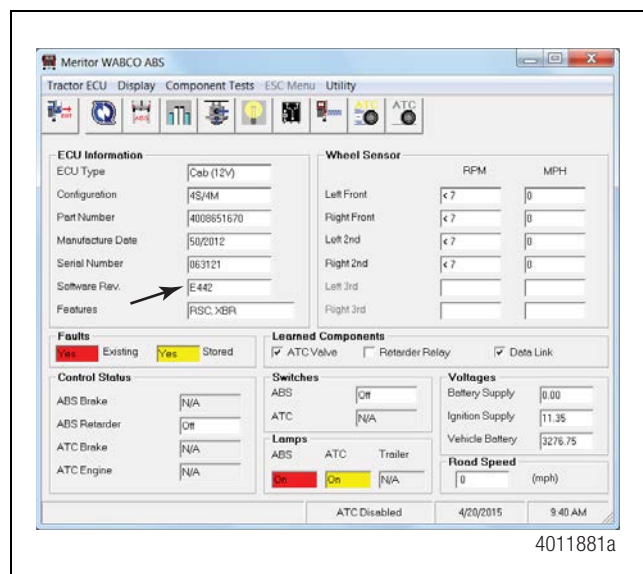


Figure 1

#### Update Procedures

This update requires you to install the Tractor ABS ECU TOOLWrench software version 1.64.0. Once it is installed, run the software update TOOLWrench.exe to complete the update.

#### Install the Software

**NOTE:** An internet connection is required to obtain the Tractor ABS ECU TOOLWrench software version 1.64.0.

1. On a web browser, navigate to <ftp://ftp.mwtoolbox.com>.

**NOTE:** The password is case sensitive.

- When prompted, enter the following User ID and password.
  - Username: TOOLWRENCH1640
  - Password: meritorwabco
- Navigate to the link: TOOLWrench Version 1.64.0.zip.
- When prompted to open or save the file, select Save.
- When prompted to Save As, save the file to a known location.
- After the file is downloaded, select Open.
- Unzip the TOOLWrench Version 1.64.0.zip.

The folder will contain two files:

- TOOLWrench Version 1.64.0.exe
- PCDiag32.dll

## Run the Update

- Turn the vehicle ignition OFF.
- Connect the computer to the vehicle's SAE J1708 Off-Board Diagnostic Connector using a diagnostic interface.
- Turn ON the vehicle ignition switch.
- When running this software, verify you are using the correct device and protocol. If you are not sure, use the selection screen for Diagnostic Interfaces by selecting the Adapter Selection menu in the top toolbar of the TOOLWrench application. Figure 2.

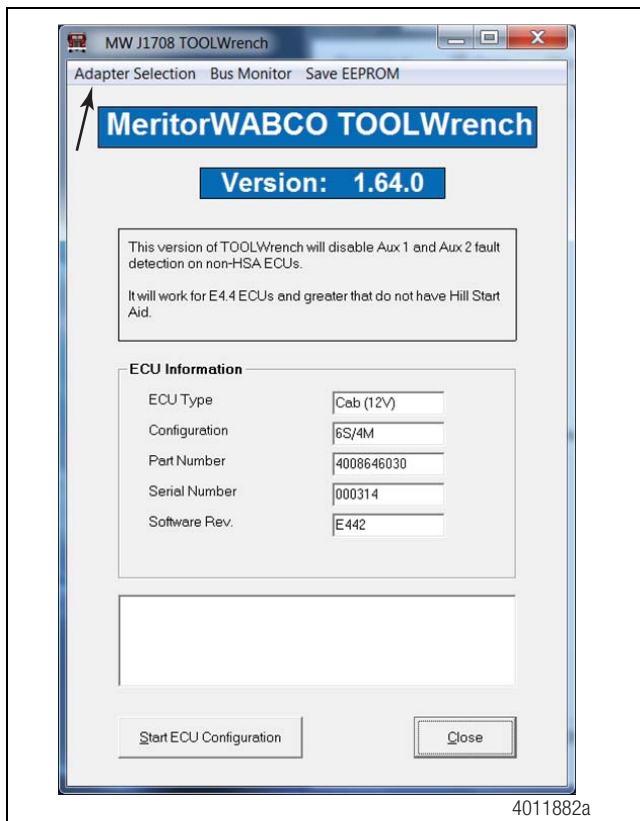


Figure 2

- From the "Vendor" pull-down list, select the device name for your specific diagnostic interface (e.g. NEXIQ or NOREGON).
- From the "Protocol" pull-down list, select: **J1708**.
- From the "Adapter" pull-down list, select the appropriate adapter for your device. Refer to the examples in Figure 3 and Figure 4.

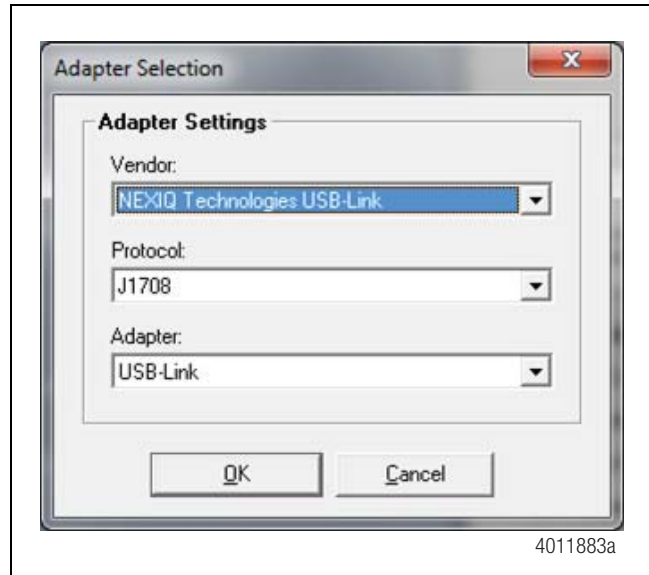


Figure 3

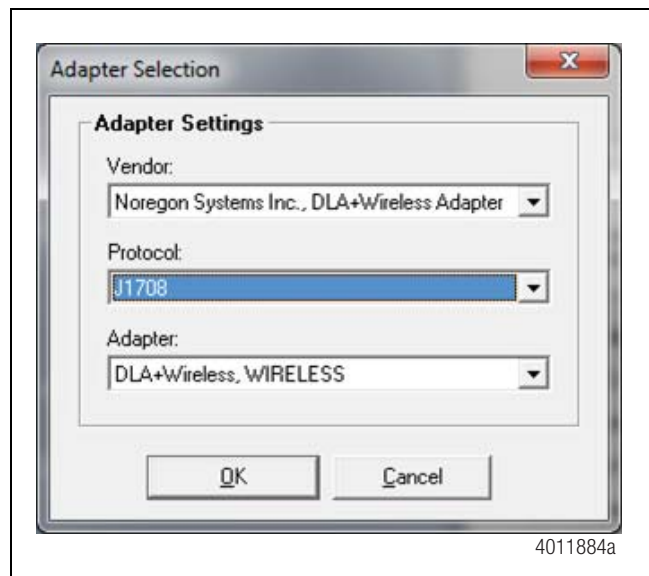
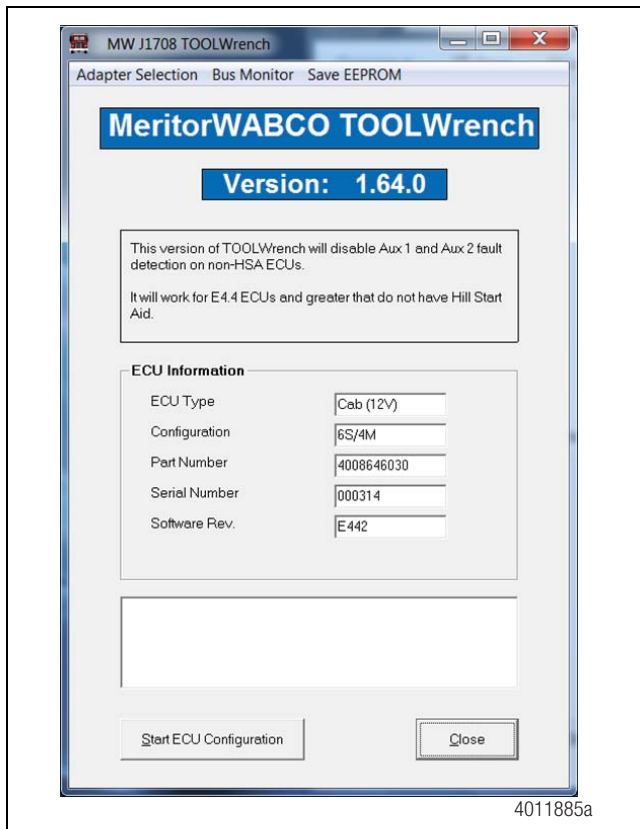


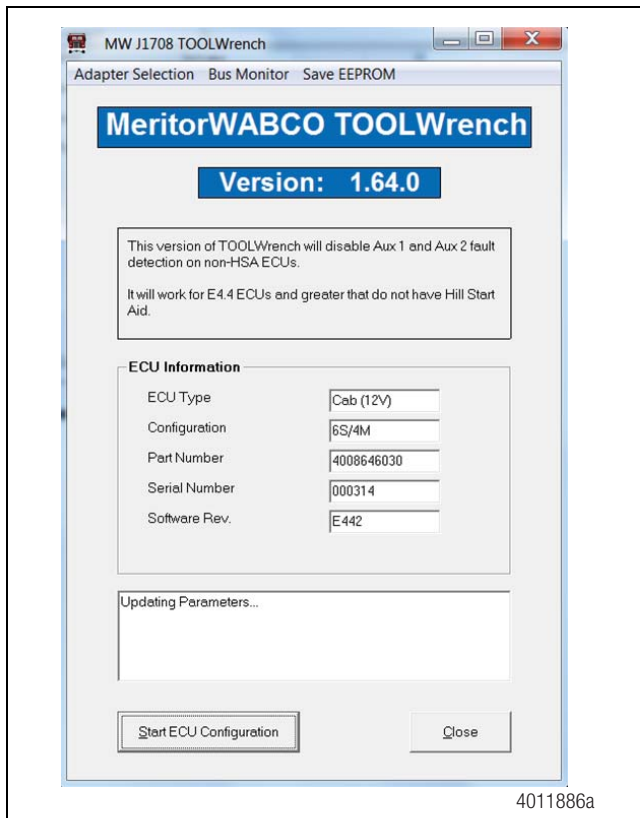
Figure 4

- Run the program file **TOOLWrench Version 1.64.0.exe**.
- Click on the Start ECU Configuration button. Figure 5.



**Figure 5**

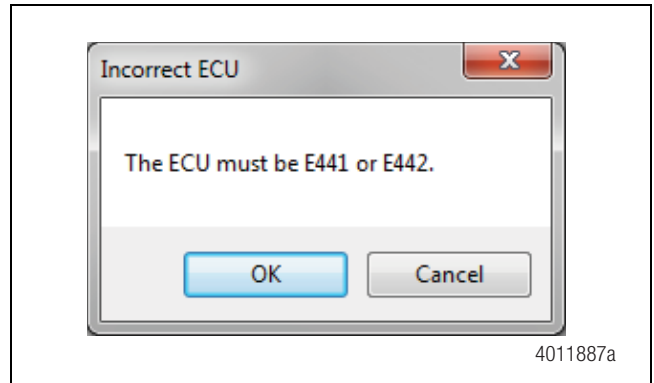
The message in the status field should indicate “Updating Parameters”. Figure 6.



**Figure 6**

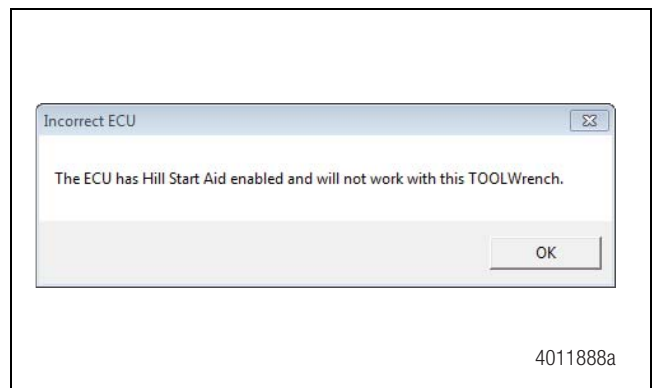
10. If an incorrect ECU has been attempted to be configured, one of the following messages will appear.

- A. If the ECU does not have E4.4 software E441 or E442, it cannot be used with this TOOLWrench. Figure 7.



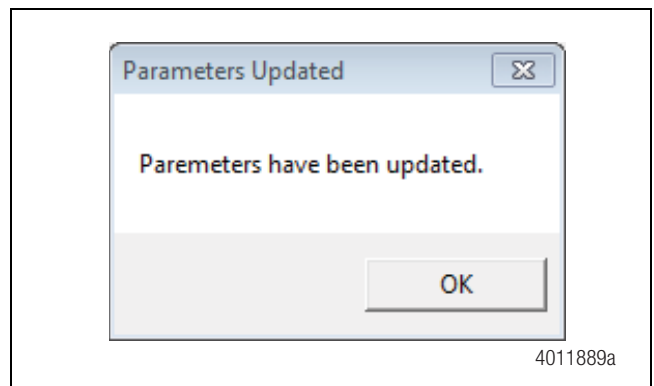
**Figure 7**

- B. If the ECU has Hill Start Aid Enabled, it cannot be used with this TOOLWrench. Figure 8.



**Figure 8**

11. Once the Parameter update is complete, the following notification will appear. Figure 9.



**Figure 9**

12. Cycle vehicle ignition OFF for a few minutes to complete ECU update.

13. Save the Fault Report from Meritor WABCO TOOLBOX™ Software. Use the claim number as the file name (xxxxxxx.txt).
14. **IMPORTANT:** Once the Fault Report is saved, a message will appear informing the location and filename.

## Warranty

This procedure is warrantable only if the described condition exists and the repair is performed within the applicable base warranty period. If a stored or active fault is not found, this procedure is considered preventative and warranty does not apply.

Within the OEM warranty coverage period, the claim should be submitted to the OEM with the Fault Report attached and at the same time, sent directly to [warranty@meritor.com](mailto:warranty@meritor.com) including "Meritor WABCO" and the OEM claim number in the subject line. Otherwise, contact the Meritor OnTrac™ Customer Call Center at 1-866-OnTrac1 (866-668-7221).

Document	Procedure	Standard Repair Time
TP-1587	E4.4 Auxiliary Parameter Update	0.2

## MERITOR WABCO

**Meritor WABCO Vehicle Control Systems**  
 2135 West Maple Road  
 Troy, MI 48084-7121 USA  
 866-OnTrac1 (668-7221)  
[meritorwabco.com](http://meritorwabco.com)

Information contained in this publication was in effect at the time the publication was approved for printing and is subject to change without notice or liability. Meritor WABCO reserves the right to revise the information presented or to discontinue the production of parts described at any time.

Copyright 2015  
 Meritor, Inc.  
 All Rights Reserved

Printed in USA

TP-1587  
 Issued 05-15  
 (16579)