

MERITOR WABCO

Technical Bulletin

Update the Tire Size Parameters in E Version ABS ECUs Using TOOLWrench 3.15.0

Freightliner Vehicles with DT12 Transmissions Only

Hazard Alert Messages

Read and observe all Warning and Caution hazard alert messages in this publication. They provide information that can help prevent serious personal injury, damage to components, or both.

WARNING

To prevent serious eye injury, always wear safe eye protection when you perform vehicle maintenance or service.

Park the vehicle on a level surface. Block the wheels to prevent the vehicle from moving.

How to Obtain Additional Maintenance, Service and Product Information

For more information about E Version Tractor ABS ECUs, refer to Maintenance Manual MM-0112, Anti-Lock Braking System (ABS) and Electronic Stability Controls (ESC) For E Version ECUs 12-Volt and 24-Volt Systems. To obtain this publication or if you have any questions about the material covered in this technical bulletin, please contact the Meritor OnTrac™ Customer Call Center at 866-OnTrac1 (668-7221) or visit our website: meritorwabco.com.

System Description and Operation

The ECU is the control center of the ABS. MeritorWABCO ABS ECUs with E4.4 software version or newer have the ability to support many advanced features such as Roll Stability Control, Electronic Stability Control and Hill Start Aid. The ABS ECU receives information from the sensors, processes data and sends signals to modulator valves and active braking valves to achieve different tasks based on how the ECU is configured.

Purpose of the ABS ECU Parameter Update

NOTE: This update is for Freightliner vehicles with DT12 transmissions only.

Vehicles with DT12 transmissions may inadvertently turn on the ABS lamp and set a DTC (SID 810 FMI 08 - Tire size request, plausibility check of the speedometer CAN signal, speedometer adjustment). This TOOLWrench software will update the tire size parameters in the ECU to prevent this issue from occurring. The procedure only applies to E8 software version ECUs.

The software version can be found in the ECU information field of TOOLBOX™ Software. Figure 1.

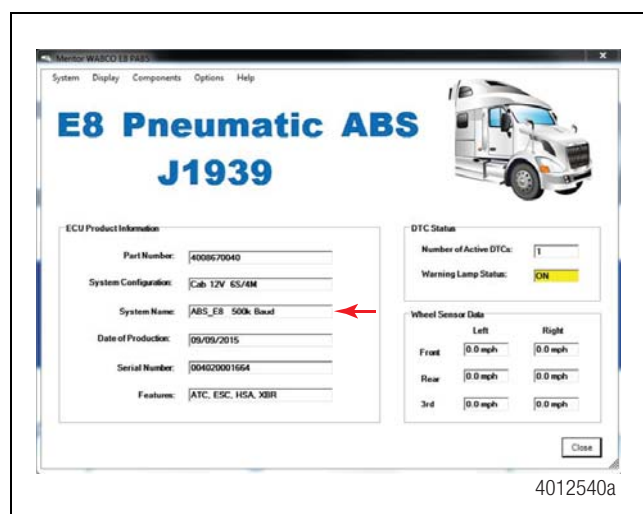


Figure 1

Update Procedures

This update requires you to install the Tractor ABS ECU TOOLWrench software version 3.15.0. Once it is installed on your PC, run the software update TOOLWrench.exe to complete the update.

Install the Software

When you receive the software "TOOLWrench 3.15.0 Tire Size Request Off and Update ABS WL Strategy.XEX" from MeritorWABCO, you must change the file extension to make the file executable as follows.

1. Right click on the file and choose Rename from the drop-down box that appears.

2. Select the file name and change the file extension from .XEX to .EXE. When finished, the file name will be "TOOLWrench 3.15.0 Tire Size Request Off and Update ABS WL Strategy.EXE". Figure 2.

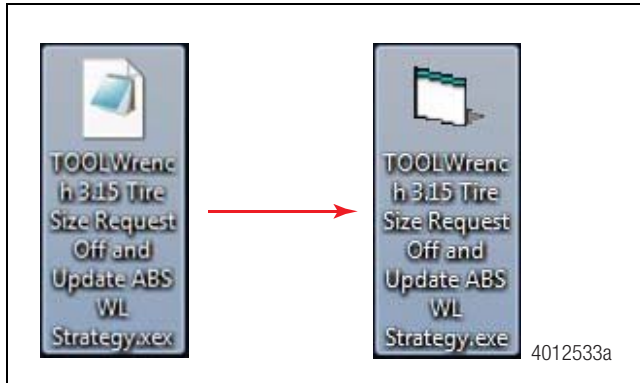


Figure 2

Run the Update

1. Turn the vehicle ignition switch to OFF.
2. Connect the computer to the vehicle's SAE J1939 Off-Board Diagnostic Connector using a diagnostic interface.
3. Turn the vehicle ignition switch to the ON position.
4. Double-click on TOOLWrench Version 3.15.0.exe to run the program.
5. When installing this software, verify you are using the correct Diagnostic Adapter and protocol. If you are not sure, use the selection screen for Diagnostic Interfaces by selecting the Adapter Selection menu in the top toolbar of the TOOLWrench application. Figure 3.

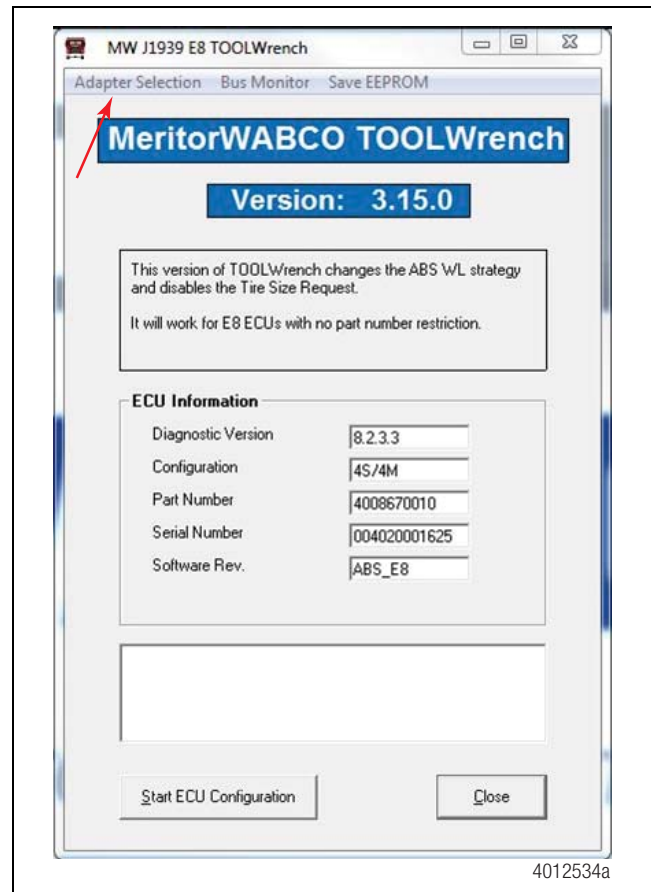


Figure 3

6. From the "Vendor" pull-down list, select the device name for your specific diagnostic interface (e.g. NEXIQ or NOREGON).
7. From the "Protocol" pull-down list, select: J1939.
8. From the "Adapter" pull-down list, select the appropriate adapter for your device. Refer to the examples in Figure 4 and Figure 5.



Figure 4

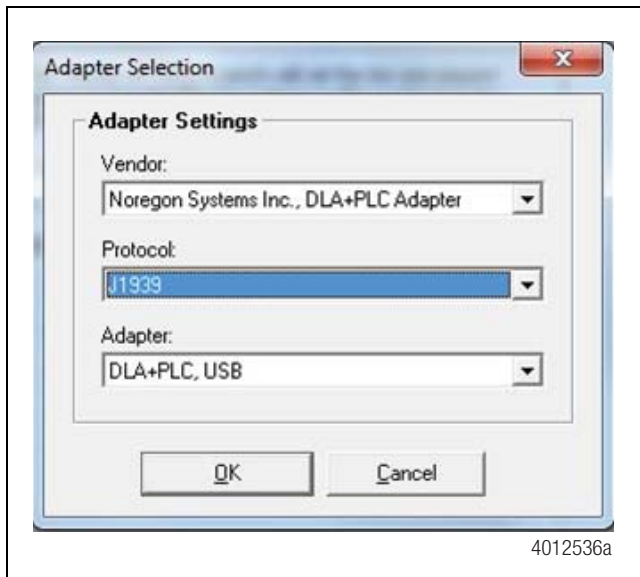


Figure 5

9. Once all of the Adapter Selection settings have been made, click OK.
10. Click on the “Start ECU Configuration” button. Figure 6.

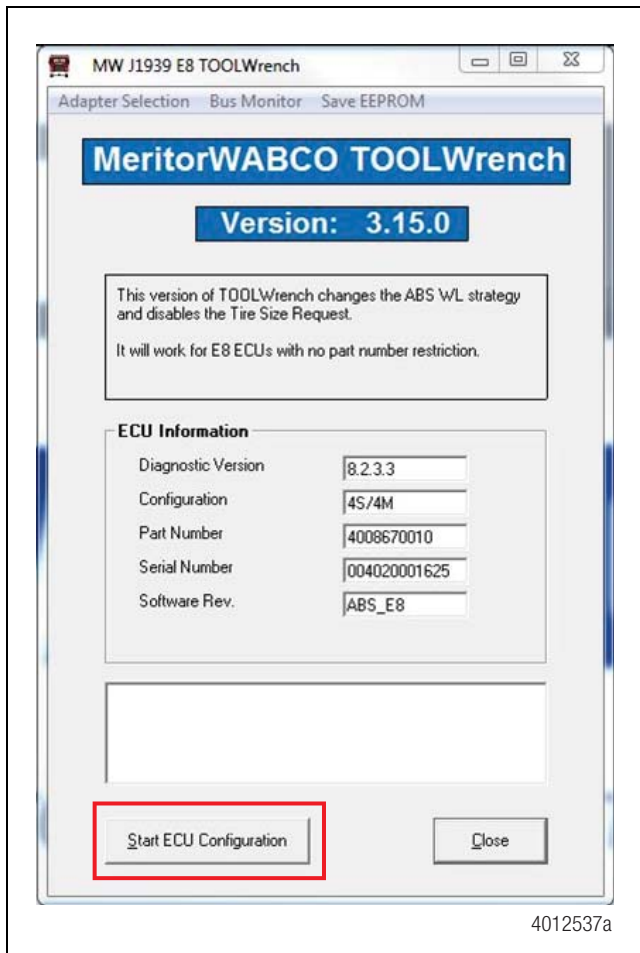


Figure 6

11. If you attempt to update an E4.X ABS ECU using “TOOLWrench 3.15.0 Tire Size Request Off and Update ABS WL Strategy.exe”, the following message will appear. Click OK. Figure 7.

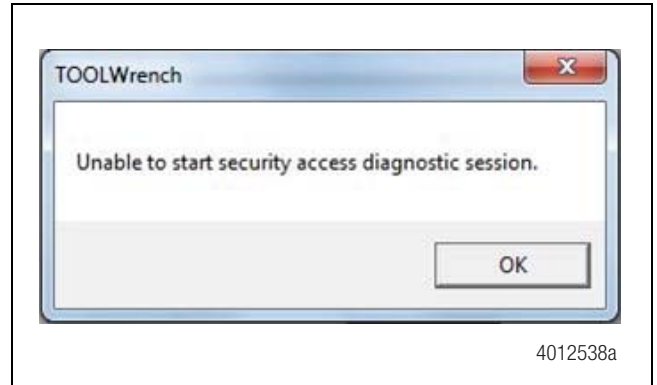


Figure 7

12. When the parameter update has completed successfully, the following notification will appear. Click OK. Figure 8.

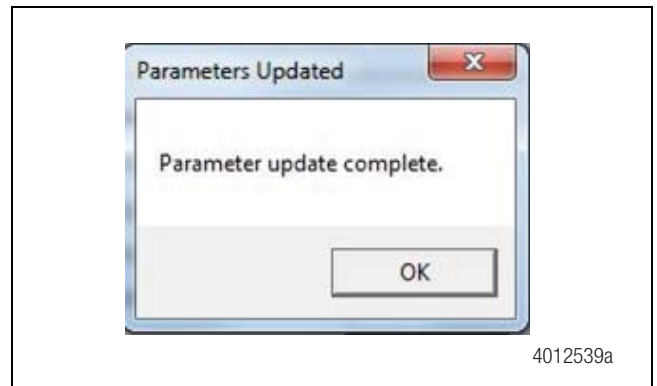


Figure 8

13. Cycle the vehicle ignition OFF for a few minutes to complete the ECU update.

Warranty

This procedure is excluded from Meritor WABCO warranty coverage. All claims within OEM warranty coverage guidelines are to be filed directly to the OEM.

MERITOR WABCO

Meritor WABCO Vehicle Control Systems
2135 West Maple Road
Troy, MI 48084-7121 USA
866-OnTrac1 (668-7221)
meritorwabco.com

Information contained in this publication was in effect at the time the publication was approved for printing and is subject to change without notice or liability. Meritor WABCO reserves the right to revise the information presented or to discontinue the production of parts described at any time.

Copyright 2016
Meritor, Inc.
All Rights Reserved

Printed in USA

TP-1671
Revised 09-16
(16579)