

MERITOR WABCO

Technical Bulletin

Update to Disable the PLC Gateway in E-version ABS ECUs Using TOOLWrench 2.27.1

Hazard Alert Messages

Read and observe all warnings and caution hazard alert messages in this publication. They provide information that can help prevent serious personal injury, damage to components, or both.

WARNING

To prevent serious eye injury, always wear safe eye protection when you perform vehicle maintenance or service.

Park the vehicle on a level surface. Block the wheels to prevent the vehicle from moving. Support the vehicle with safety stands. Do not work under a vehicle supported only by jacks. Jacks can slip and fall over. Serious personal injury and damage to components can result.

How to Obtain Additional Maintenance, Service and Product Information

If you have any questions regarding the material covered in this bulletin, or for information about the Meritor WABCO product line, please contact the Meritor OnTrac™ Customer Call Center at 866-668-7221 or visit our website: meritorwabco.com.

Update Procedures

This update requires you to install the following two files in your laptop:

- A. The Tractor ABS ECU TOOLWrench software version 2.27.1
- B. The J1939Diag_UDS.dll file

NOTE: The update process consists of two different procedures. Procedures must be performed in the order presented in this publication. Please review all of the following instructions carefully first before proceeding.

Install the Software and Supporting Files

When you receive the software TOOLWrench_Disable_PLC Gateway.zip file from Meritor WABCO, perform the following:

1. Create a specific folder in your laptop desktop.
2. Extract the two files from the .zip file and put them into this newly created folder. Make sure both files are in the same folder.
3. Right-click on the file "TOOLWrench 2.27.1 E44b Disable PLC Gateway" and choose "Rename" from the drop-down box that is displayed.
4. Select the file name and change the file extension from .XEX to .EXE. When finished, the file name will be TOOLWrench 2.27.1 E44b Disable PLC Gateway.exe. Figure 1.

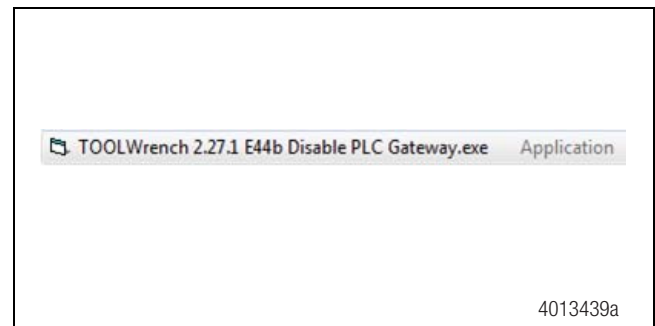


Figure 1

Run the Update

1. Turn the vehicle ignition switch to OFF.
2. Connect the computer to the vehicle's SAE J1939 Off-Board Diagnostic Connector using a diagnostic interface.
3. Turn the vehicle ignition switch to the ON position.
4. Go to the folder you created in your laptop desktop.
5. Double-click on TOOLWrench Version 2.27.1.exe to run the program.
6. When installing the software, verify you are using the correct diagnostic adapter and protocol. If you are not sure, use the selection screen for diagnostic interfaces by selecting the "Adapter Selection" menu in the top toolbar of the TOOLWrench application. Figure 2.

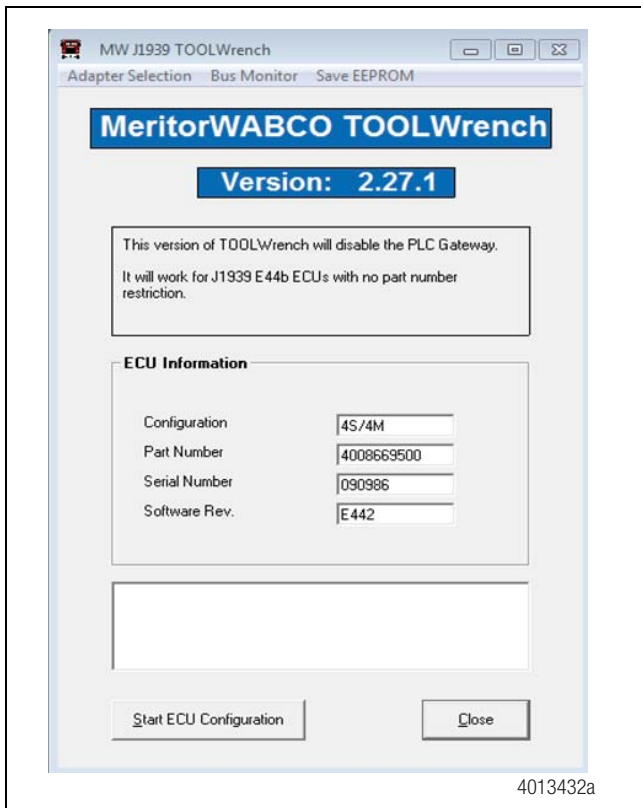


Figure 2

7. From the “Vendor” pull-down list, select the device name for your specific diagnostic interface (e.g. NEXIQ or NOREGON).
8. From the “Protocol” pull-down list, select J1939.
9. From the “Adapter” pull-down list, select the appropriate adapter for your device. Refer to the example shown in Figure 3.



Figure 3

10. Once all of the adapter selection settings have been made, click “OK”.
11. Click on the “Start ECU Configuration” button. Figure 4.

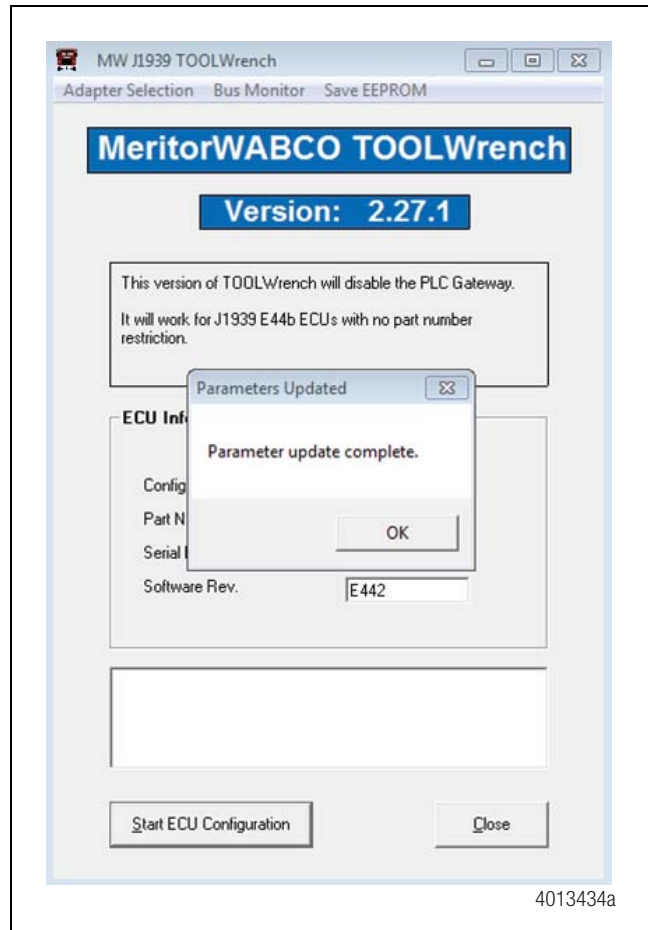


Figure 4

12. When the parameter update has been completed successfully, the notification shown in Figure 4 will be displayed. Click “OK”.
13. Cycle the ignition to complete the update.

MERITOR WABCO

Meritor WABCO Vehicle Control Systems
 2135 West Maple Road
 Troy, MI 48084-7121 USA
 866-OnTrac1 (668-7221)
 meritorwabco.com

Information contained in this publication was in effect at the time the publication was approved for printing and is subject to change without notice or liability. Meritor WABCO reserves the right to revise the information presented or to discontinue the production of parts described at any time.

Copyright 2017
 Meritor, Inc.
 All Rights Reserved

Printed in USA

TP-1784
 Issued 05-17
 (16579)