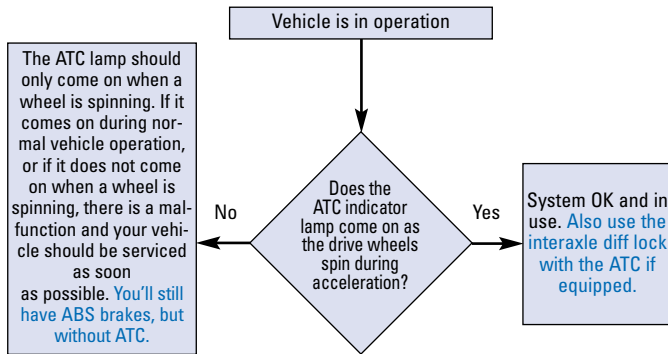


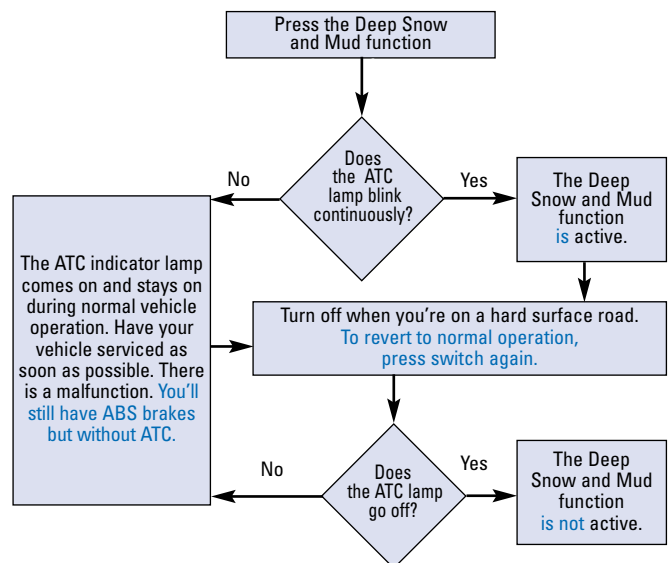
Optional Automatic Traction Control (ATC):

- Helps you accelerate on slippery surfaces and reduce drive wheel overspin.
- The ATC indicator lamp is marked ATC, ASR or Wheel Spin (depends on vehicle make/model).
- Some vehicles without ATC have a Wheel Spin lamp to show if drive wheels are spinning.
- The blink code diagnostic switch must be off (if equipped in vehicle).



Deep Snow and Mud Function:

- Allows more aggressive ATC function when on soft or granular surfaces such as fresh snow, mud or gravel.



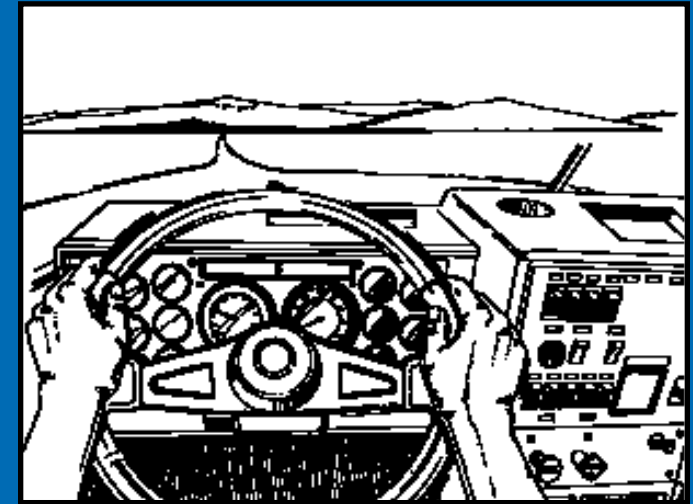
Other Information For Drivers

- Audiotape - *How to Brake with ABS** (SP-94126)
- Video - *What Every Driver Should Know About ABS* (VIDEO-T-96159V) \$20.00
- Video - *What Every Driver Should Know About ATC* (VIDEO-T-9785V) \$20.00
- Pamphlet - *Trailer ABS Warning Lamp Driver Information* (TP-97132)
- Pamphlet - *Off-Road ABS Function Driver Tips* (SP-9898)
- Poster (2'x 3') - *Trailer ABS Driver Information* (SP-97144)

* For Spanish version, add "SP" to item number
For French Canadian, add "FC" item number.

ABS DRIVER TIPS

MERITOR WABCO



To order literature
or for more information, call:
800-535-5560

MERITOR WABCO

Meritor WABCO Vehicle Control Systems
2135 West Maple Road, Troy, MI 48084
www.meritorauto.com

ABS helps prevent wheel lock-up during braking to increase vehicle stability and driver control.

How to Brake with ABS

Do what good drivers have always been doing; brake just the way you always have — Apply brakes as normal to stop in time. When your ABS starts working, don't release your brakes — maintain brake pressure.

■ If driving with a single trailer, doubles or triples...

Watch your trailer(s) through your mirrors and correct brake pressure as necessary to keep in a straight line.

■ If only your tractor has ABS...

Use your rig's brakes as necessary to straighten out your trailer if it swings out. Watch the trailer through your mirrors to make sure it follows your tractor properly.

■ If only your trailer has ABS...

Use your rig's brakes as necessary to maintain control and keep your combination in its lane.

■ If driving a straight truck or bus...

Maintain continuous pressure on your brake pedal while steering clear of any obstacles.

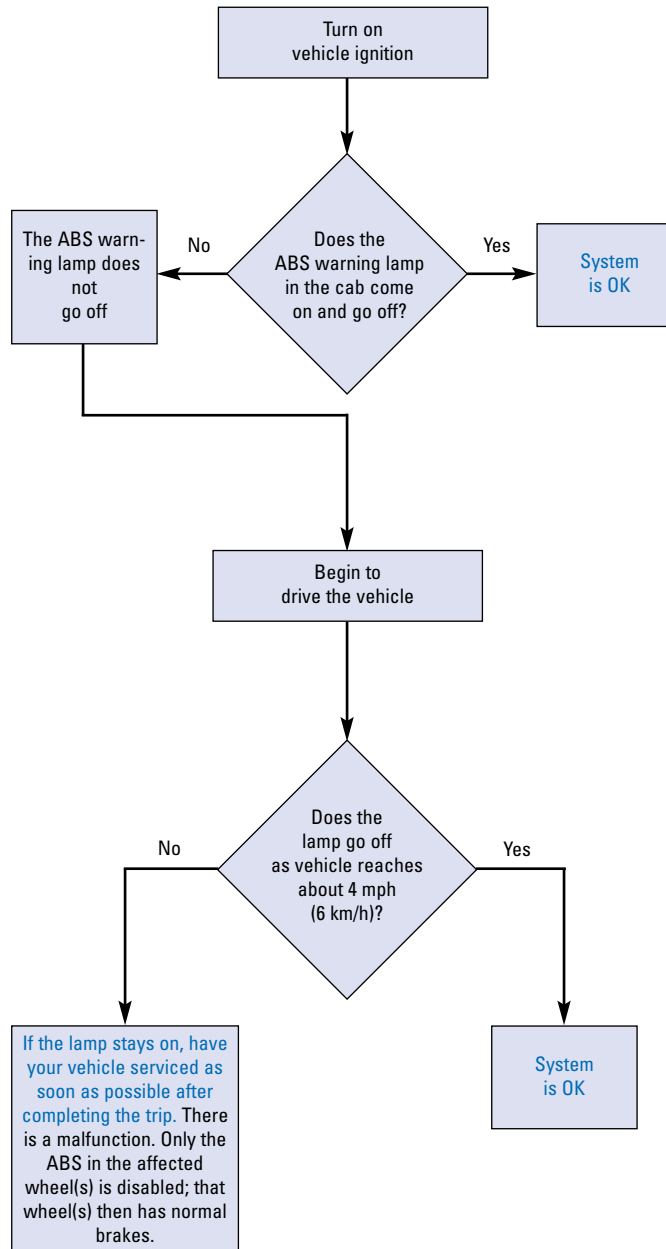
Avoid rapid "pumping" of the brakes — During a brake application that could result in a wheel lock, Meritor WABCO ABS automatically releases and applies the brakes up to five times per second, obviously much faster than you could do pumping the brake pedal.

Always remember that you are the most important element in the safe operation of your vehicle — ABS is not an excuse to take unnecessary risks. Always drive carefully and stay a safe distance away from the vehicle in front of you.

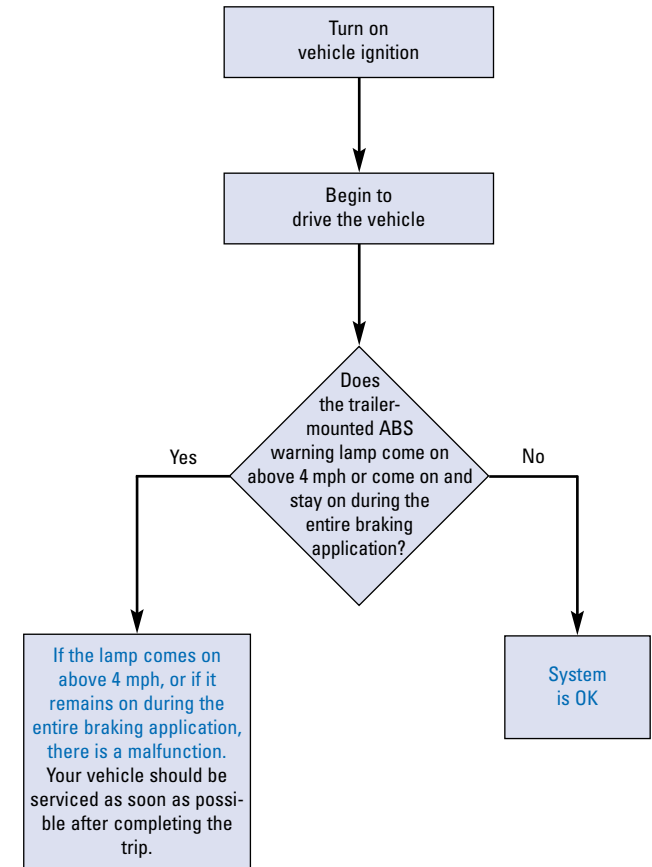
If your vehicle is being towed — Disconnect the ECU or pull the ABS fuse.

ABS for Tractors, Trucks and Buses

- The blink code diagnostic switch must be off (if equipped in vehicle).



Trailer ABS



Note: Depending how the ABS is powered, the lamp may come on briefly at ignition and then go off, or briefly flash each time you apply the brakes on a moving vehicle.