

MERITOR WABCO

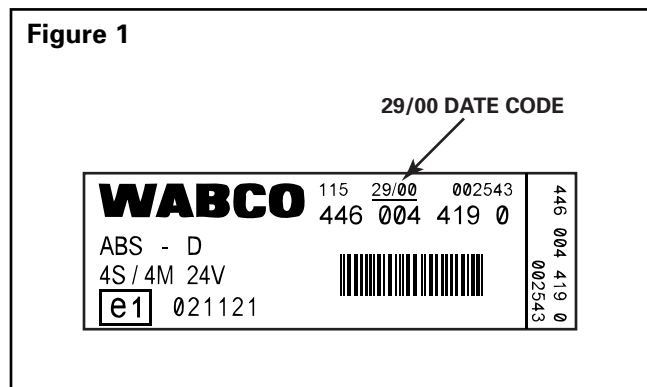
Technical Bulletin

Software Change Affecting ECUs with Date Codes After 25/00

Application

The information in this technical bulletin applies to all D- and E-version frame and D- and E-version cab-mounted Meritor WABCO pneumatic ABS Electronic Control Units (ECUs) with date codes after 25/00 (25/00 or higher) that are using Automatic Traction Control (ATC) and a J1939 datalink. This bulletin **does not apply** to D-version Basic ECUs.

The date code appears on the ECU identification label, as illustrated below.



This bulletin applies to ECUs with date codes after 25/00.

The date code is also displayed on the Pro-Link and TOOLBOX Software screens:

TOOLBOX Software: Main Screen
Pro-Link: Program ID screen

Refer to the Pro-Link or TOOLBOX Software operating manuals for complete instructions for using these programs.

Overview

The ABS ECU reads the status of the vehicle brake switch from the J1939 datalink. This prevents ATC activation while the vehicle brakes are applied. The ABS ECU will disable ATC when the brake switch is active. This feature must be diagnosed during testing.

If you install an ECU with a date code after 25/00 in an older vehicle, the ATC feature may be disabled depending upon the vehicle.

Diagnostics

Use Meritor WABCO TOOLBOX Software or an MPSI Pro-Link to verify that ATC is available. If there is a problem, follow the instruction in Recommended Repair. Illustrations of TOOLBOX and Pro-Link screens indicating both error message and system OK conditions are shown in Figures 2 and 3.

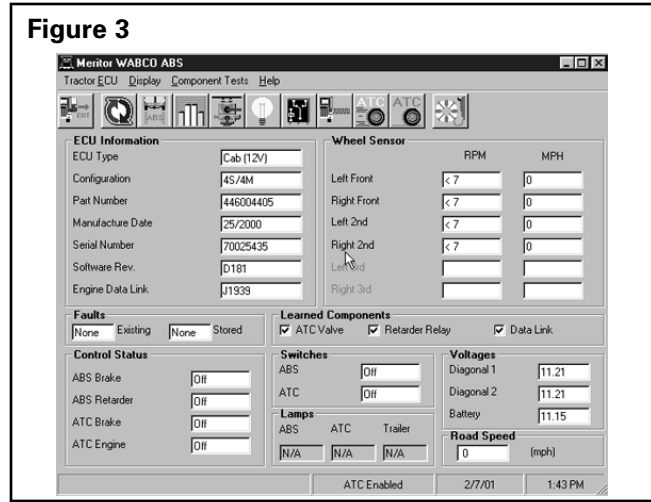
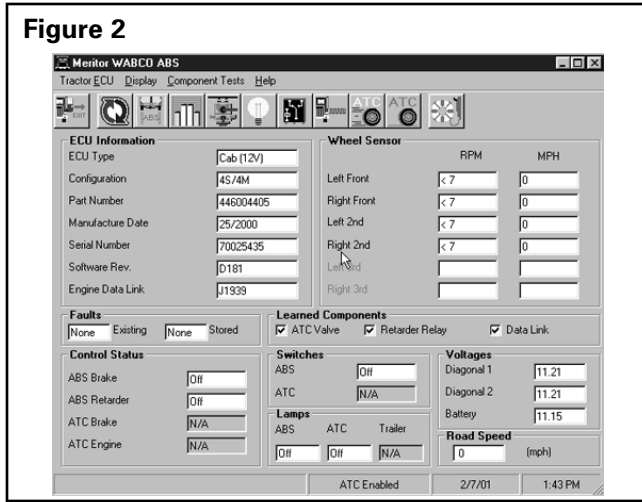
Recommended Repair

Run a wire from the brake switch to the engine control computer. This will allow the engine electronic control module to properly broadcast the status of the brake switch. Proper brake switch information allows the ATC to function.

TOOLBOX Software

On the TOOLBOX **Main Screen**, check the status of ATC:

On the TOOLBOX **Main Screen**:



Control Status Field:

ATC Brake: N/A
 ATC Engine: N/A

Switches Field:

ATC: N/A

Status at bottom of screen

ATC: Enabled

This indicates **ATC is not available**. Make the recommended repair. Refer to Recommended Repair for instructions.

Control Status Field:

ATC Brake: OFF
 ATC Engine: OFF

Switches Field:

ATC: OFF

Status at bottom of screen

ATC: Enabled

This indicates **ATC is available**.

Pro-Link

Use the **Components Test** Menu to select **ABS/ATC Switches**.

Example of ATC disabled by brake active signal:

Example of ATC enabled:



ATC Switch: N/A

ATC Switch: Off

This indicates **ATC is not available**. Make the recommended repair. Refer to Recommended Repair for instructions.

This indicates **ATC is available**.



Meritor WABCO
 Vehicle Control Systems
 3331 West Big Beaver Road, Suite 300
 Troy, MI 48084 USA
 800-535-5560
 www.arvinmeritor.com

Information contained in this publication was in effect at the time the publication was approved for printing and is subject to change without notice or liability. ArvinMeritor Commercial Vehicle Systems reserves the right to revise the information presented or discontinue the production of parts described at any time.

Copyright 2001
 ArvinMeritor, Inc.
 All Rights Reserved

Printed in the USA

TP-0138
 Issued 03-01
 16579/24240